

International Mini-Symposium on Power devices and its related materials

~ Recent Research Progress and Reports of international technology trends ~

Aug. 3rd, 2018

Fri.

14:00~16:25

Admission
FREE

Yamaguchi Grand Hotel (Room ; Hohou, 2F)

Program

Chairperson / Dr. Ryuichi Komatsu (Professor, Yamaguchi University)

14:00~14:10	Opening Remarks	Dr. Masanobu Azuma (Project Director, Yamaguchi prefectural industrial technology institute)
14:10~14:40	Keynote Lecture	Dr. Kazuyuki Tadatomo (Professor, Yamaguchi University) "Recent progress of self-standing high quality GaN substrate for power devices"
14:40~15:10	Special Lecture	Dr. Masaaki Kuzuhara (Professor, University of Fukui) "Recent progress of GaN power devices toward its social implementation"
15:10~15:25	Short Break	15 min.
15:25~15:50	Corporate Lecture	Dr. Yukihiro Kanechika (Manager, Specialty Products Development Dept., Tokuyama Corporation) "Novel heat dissipation materials for power devices"
15:50~16:20	International technology trend survey Report	Dr. Kohtaro Katagiri (Sub-manager, Yamaguchi prefectural industrial technology institute) "Reports on international technical trends of GaN substrate and its competitiveness in power device fields"
16:20~16:25	Closing Remarks	Dr. Masanobu Azuma (Project Director, Yamaguchi prefectural industrial technology institute)

Sponsored by

Yamaguchi prefectural industrial technology institute
Yamaguchi University
Tokyo University of Science, Yamaguchi

Co-Sponsored by

Research Society for Energy of Next Generation

Contact Information

4-1-1, Asutopia, Ube-city Yamaguchi 755-0195 Japan
Yamaguchi prefectural industrial technology institute
Innovation Promotion Center
TEL : +81-836-53-5061 FAX : +81-836-53-5071
Mail : inv_environment@iti-yamaguchi.or.jp

Research Activities of Keynote Lecturer, Prof. Dr. Masaaki Kuzuhara

Affiliation Electrical and Electronics Engineering, University of Fukui

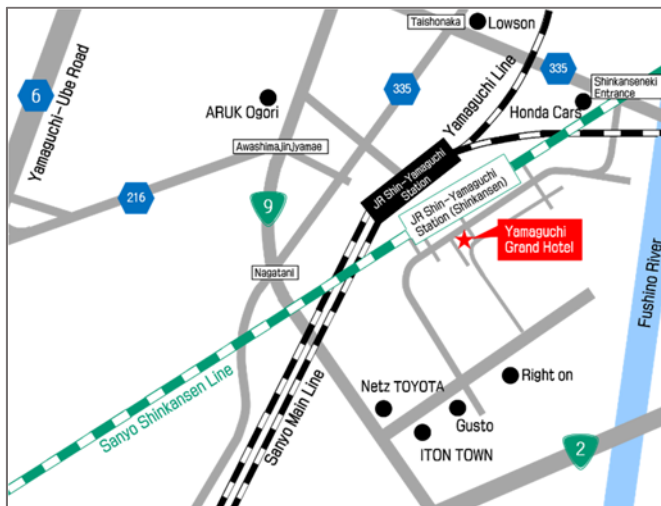
Education 1979 B.S. degree in Electrical Engineering, Kyoto Univ.
1981 M.S. degree in Electrical Engineering, Kyoto Univ.
1991 Ph.D. degree, Kyoto Univ.

Degree Doctor of Engineering

Awards & Honors Ichimura Award (2002)
IEEE Fellow (2005)
Japan Society of Applied Physics (JSAP) Fellow (2013)
Scientific and Academic Award, Fukui Pref. (2016)



● Access Map ●



Visiting by car

- ◆ Chugoku Expressway : Around 7 minutes from the Ogori IC
- ◆ Sanyo Expressway : Around 10 minutes from the Yamaguchi-minami IC
- ◆ Number of parking spaces: 120

From Yamaguchi-Ube Airport

- ◆ Around 40 minutes by car
- ◆ A direct bus runs from Yamaguchi-Ube Airport to Shin-Yamaguchi Station Shinkansen entrance.
Duration: Around 30 minutes.
One-way: 890yen. Round trip: 1,600yen.
Please check the timetable of the bus at the URL below.
<http://www.ubebus.jp/shuttlebus/timetable/airport/>

By bus, train, and Shinkansen

- ◆ From Shin-Yamaguchi Station : Around 1 minute on foot.

Venue : Yamaguchi Grand Hotel

1-1, Kogane-machi, Ogori, Yamaguchi-city, Yamaguchi 754-0021
TEL:083-972-7777 FAX:083-972-7393

Please check the URL below.

● <https://ygh.co.jp/access.php>

Please fax or e-mail us following application form by Jul. 31th.

Application form

F a x : +81-836-53-5071

E-mail : inv_environment@iti-yamaguchi.or.jp



● Contact us ●

Yamaguchi prefectural industrial technology institute
4-1-1, Asutopia, Ube-city Yamaguchi
755-0195 Japan
☎+81-836-53-5061 fax +81-836-53-5071

Company/
Association :

Address :

Representative TEL :
contact : E-mail :

FAX :

Name	Department/Division	E-mail